



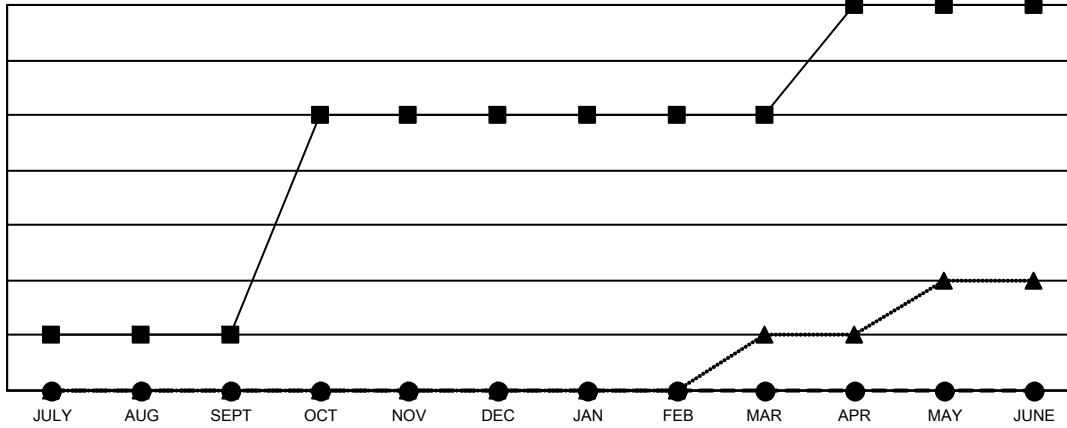
GMT: OPEN

GMT CA NA

| Clubs                 |               |           |               |
|-----------------------|---------------|-----------|---------------|
| RESULTS FOR 2023-2024 |               |           |               |
| QUARTER               | NEW CLUB GOAL | NEW CLUBS | DROPPED CLUBS |
| JULY/AUG/SEPT         | 1             | 0         | 0             |
| OCT/NOV/DEC           | 4             | 0         | 0             |
| JAN/FEB/MAR           | 0             | 0         | 0             |
| APR/MAY/JUNE          | 2             | 0         | 0             |

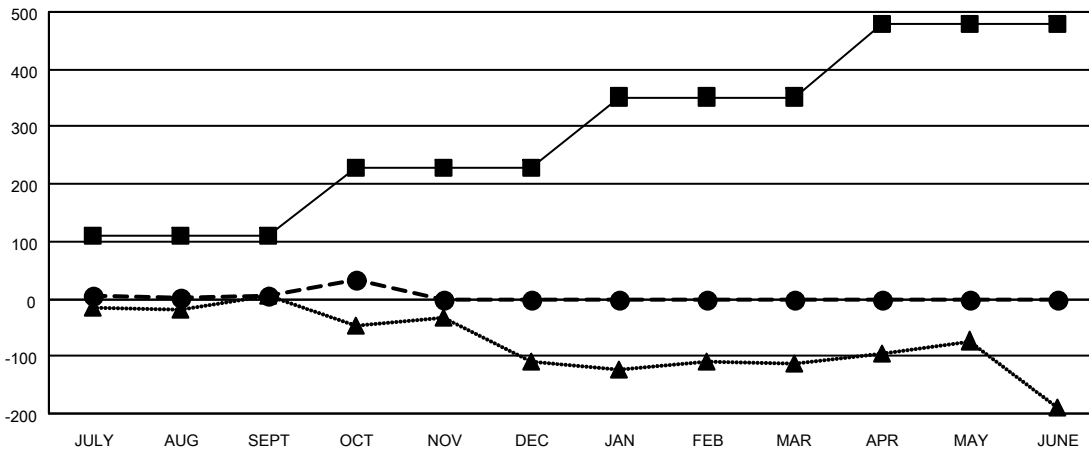
| Members               |                        |                      |  |
|-----------------------|------------------------|----------------------|--|
| RESULTS FOR 2023-2024 |                        |                      |  |
| QUARTER               | MEMBER GROWTH NET GOAL | MEMBER GROWTH ACTUAL | DROPPED MEMBERS ACTUAL (including transfers) |
| JULY/AUG/SEPT         | 111                    | 125                  | 106  |
| OCT/NOV/DEC           | 117                    | 87                   | 49   |
| JAN/FEB/MAR           | 124                    | 0                    | 0  |
| APR/MAY/JUNE          | 127                    | 0                    | 0  |

GOALS AND ACTUAL NEW CLUBS CUMULATIVE



- - CURRENT YEAR GOALS FOR NEW CLUBS
- - CURRENT YEAR ACTUAL NEW CLUBS
- ▲ - LAST YEAR ACTUAL NEW CLUBS

GOALS AND ACTUAL MEMBERS CUMULATIVE



- - MEMBER GROWTH NET GOAL
- - MEMBER GROWTH ACTUAL
- ▲ - LAST YEAR MEMBERSHIP ACTUAL

|                        |   |                                     |
|------------------------|---|-------------------------------------|
| DROPPED CLUBS: 0       | 86 CLUBS OF 287 ADDED 1 OR MORE NEW MEMBERS               | <b>GENDER DISTRIBUTION</b>          |
|                        |   | MALE 4,420 (69.40%)                 |
|                        |   | FEMALE 1,949 (30.60%)               |
| <b>DROPPED MEMBERS</b> | <a href="#">CLICK HERE FOR CUMULATIVE MEMBERSHIP DATA</a> | TOTAL FAMILY UNIT MEMBERS 974       |
| DECEASED 22            |   | FAMILY MEMBERS PAYING HALF DUES 492 |
| CLUB CANCELLED 0       |   |                                     |
| OTHER 131              |   |                                     |
| <b>TOTAL 153</b>       |   |                                     |